

OpenMOS

Market Operations System

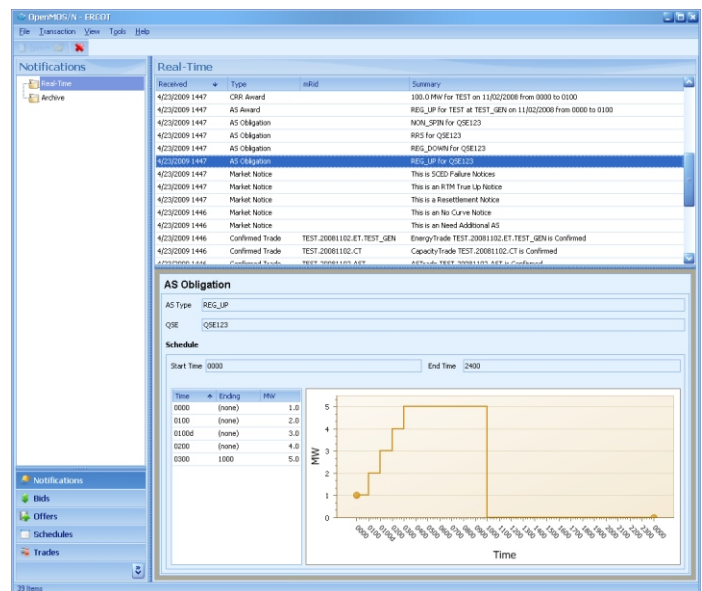
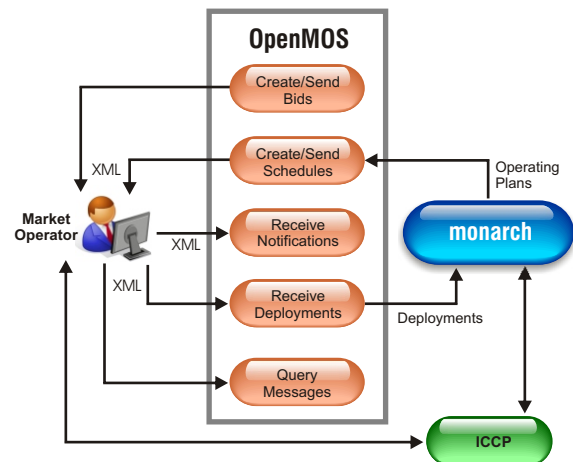
The ability for control areas, transmission providers and scheduling entities to interface with a centralized energy trading market has become a paramount issue in today's electric system operational environment. In all market groups, real-time interfacing through XML Messaging and ICCP protocols is mandatory for participation. To complicate matters, the diverse data required for effective communication, deployment implementation and after-the-fact settlement can reside on separate systems (real-time data, planning schedules and financial information).

OpenMOS™ is an open, systems-based product that provides a complete communication and response package to utilities participating in centralized energy markets. As a gateway for communication flow, **OpenMOS** provides interfaces to **monarch™** and external applications and provides a .NET-based Graphical User Interface (GUI) that is simple and elegant. It eliminates the need for the user to understand the mechanics of XML, allowing them to focus on more pertinent market concerns.

OpenMOS can be adapted to the specifics of any zonal or nodal market where XML is used for communications. ERCOT's zonal and nodal, MISO, IESO and SPP markets are fully supported. Expansions to other markets are easily accomplished by adding a message set library that supports whatever specifics are not covered by the existing libraries.

Within the **monarch** environment **OpenMOS** is fully integrated with the Operating Plans maintained by the Unit Commitment (**OpenUC™**), Load Forecast (**OpenSTLF™**) and Transaction Management System (**OpenTMS™**) products to allow for integrated construction of schedule and planning submittals.

Likewise, deployment messages are delivered directly to the Automatic Generation Control (**OpenAGC™**) for Automatic real-time implementation.



Continued...

OpenMOS Key Capabilities/Benefits:

- A powerful XML Messaging interface that covers the entire spectrum of defined market messages including public data queries, generation and demand-side submittals, queries, notifications, financial schedules, and control area and operations messages. The user is shielded from needing to know the details of XML.
- Easy to use GUI for reviewing, constructing and managing messages, schedules, bids and other submittals.
- Powerful summaries that provide broad sorting and filtering capabilities, allowing users to custom tailor their views of the market information.
- Automatic importing of schedules from formalized operating plans, minimizing the tedious task of manually transferring commitment schedules, load forecasts and transaction schedules from multiple locations.
- Automatic implementation of generation deployments, eliminating human error and time delays associated with manual transfers.
- Local storage of messages, schedules and bids making them available to any application or user.
- Multiple Market Support: **OpenMOS** can be configured to support multiple simultaneous markets for a user with generation assets that span multiple markets.

