

Design Studio

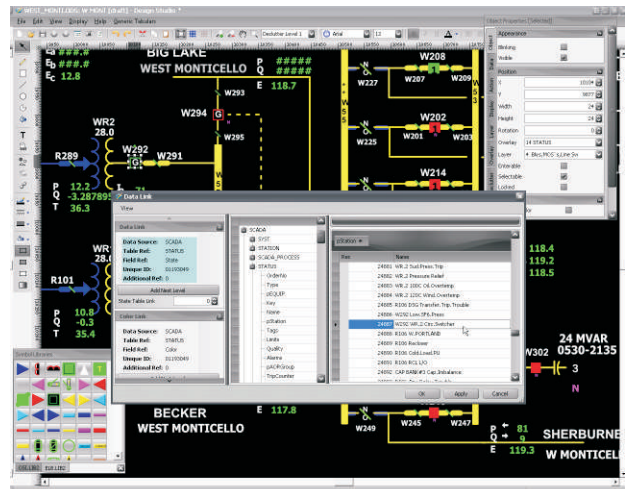
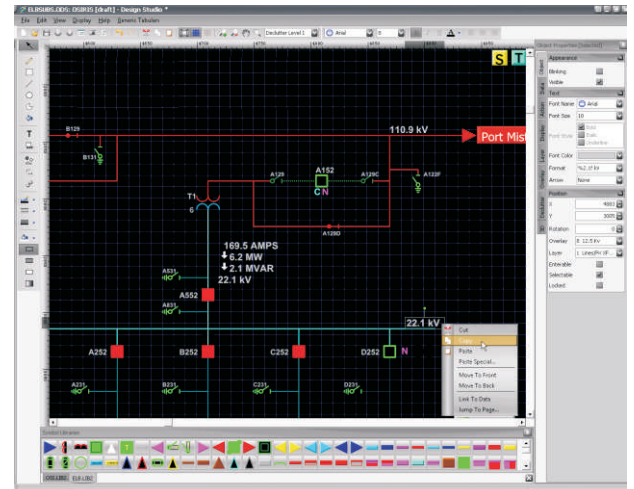
Graphical Design and Development Environment

Designing and maintaining effective real-time operational displays for critical Transmission, Distribution and Supply utility operations has been a major challenge in the industry. General CAD software used by many suppliers is often too complex and unintuitive for developing Operational displays, while custom graphical editors tend to have a very limited set of features and functionality.

OSI Design Studio™ is OSI's flagship Graphical Design and Development environment, including many of the necessary features of a generic CAD program, without the complexity. **Design Studio** is streamlined for use in real-time environments with dynamic display support. **Design Studio** is used to plan, design, develop and maintain all graphical, tabular and iconic displays for the **OpenView™** Graphical User Interface. **Design Studio** is a straight-forward, intuitive, feature rich and user-friendly display editor that employs a wide array of tool sets including multiple floating and dockable toolboxes, designed to facilitate easy and efficient display creation and maintenance.

Salient **Design Studio** features include:

- A “what you see is what you get” editing environment (no intermediate steps are required to see your immediate changes in the resulting display)
- Full Graphic World Coordinate based one-line diagram schematics
- Support for an unlimited number of high-resolution World Coordinate System maps
- Geographically oriented operational maps
- Powerful tabular, list based displays that are automatically populated by database definitions
- Full directional zooming and panning
- Transparent, semi-transparent and gradient shaded graphical objects
- Integrated user-permission based security

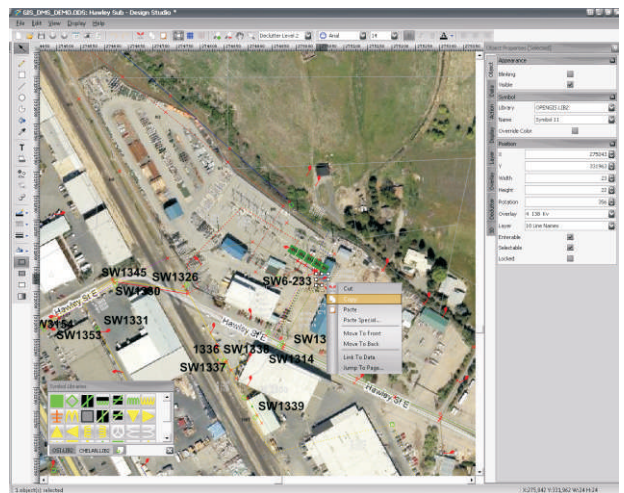


Graphical Design and Development Environment

- Support for process execution (local or server) with user-permission based security, allowing for the seamless integration of third party applications such as Microsoft tools, video streaming and more
- Graphical presentations of dynamic data elements, including directional arrows, color coding, etc.
- Support for unlimited TrueType fonts and font styles
- Simple to use tools to snap and align graphical objects to a grid template
- The ability to display, review, commit changes and automatically propagate changes to the displays of targeted users
- Flexible point tag representation and placement
- Support for unlimited symbol libraries including multi-state symbols for dynamic data visualization
- Support for Dashboard “widgets” embedded directly into one-line maps and diagrams
- A context sensitive properties editor for the quick manipulation of graphical properties
- Widget support for meters, charts, dials and other types of data representative objects
- Support for CAD importing and exporting formats (DXF, etc.)

The tools available in **Design Studio** make features in **OpenView**—such as 3D mode and advanced visualizations—easier to implement. Any 2D one-line diagram can be automatically transformed into a 3D map or an attention grabbing contour plot; without the complex tools typically required in other graphical editors. These powerful visualization features greatly enhance the Operator's situational awareness and are easily maintained in the **Design Studio** environment.

Graphical “widgets” can be integrated into any display constructed in **Design Studio**. These widgets can be a simple gauge representing a single piece of data or a complex series of graphical representations of various sets of data such as charts, trends, plots, etc. The customized layouts and user control of information presentation result in a truly user-friendly experience.



Design Studio allows OSI systems to remain highly flexible for utilities as their operational needs evolve. Regardless of what the future holds, **Design Studio** ensures that the users of **monarch™** technology are well equipped and ready to adapt with a fully functional and ultra-powerful graphical development environment.

