

EpiLog

Electronic Logging System

OSI EpiLog™ (Electronic Logging System) is a powerful and versatile digital logging system, specifically designed to provide a permanent and searchable repository of user-logged system activities, for the electric, water, petroleum and transportation industries. **EpiLog** effectively provides system operators with the technology to accurately record and later recall the comprehensive “Who”, “Where”, “What”, “Why”, “When” and “How”, of specific system events, in a highly secure, consistent and accessible manner.

Log-books within **EpiLog** are stored in a unified library containing log-entry audit trails that provide for the easy and powerful analysis and retrieval of specific log records, that can be easily linked to form consolidated records.

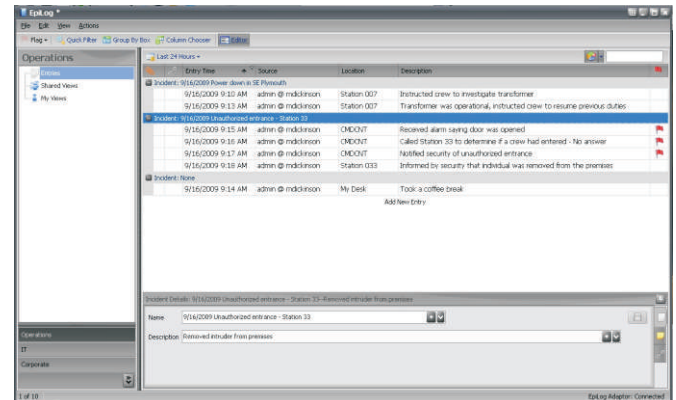
Log-books within **EpiLog** feature support for various types of logs, including:

- Operator Logs
- Administrative Logs
- Substation Logs
- Compliance Logs
- General Auditing
- Others

In addition to seamless integration with OSI's **monarch™** (Multi-platform **Open Network ARCH**itecture) platform, **EpiLog** features full compatibility with various third-party systems, providing state-of-the-art automated log entries and customized reports, independent of primary system vendor.

Supporting standard, single-workstation implementation, as well as distributed, multi-client implementations; **EpiLog** eliminates the need for traditional paper based task and event logging, by providing consistent, accessible and permanent log entry and archiving in a modern, digital format.

EpiLog's powerful and simple search, sort and filter tools provide users with fast and efficient access to relevant log entries, through an intuitive interface, with



a wide range of customizable options designed to mesh with the individual needs of any user. **EpiLog** features a modern interface view that can be filtered and restricted by specific users' credentials and responsibilities that can be easily customized to include user-defined fields and log entry forms and allows multiple log books to be run simultaneously.

Salient features of **EpiLog** include:

- Multi-user/multi-book support
- User customizable book specific database fields and log entry forms
- Powerful search, sort and filtering tools
- Log-entry cloning, linking and forwarding support
- Independently tracked log-entry and event timestamps
- User-responsibility based viewing access
- Off-line based viewing mode
- Multiple RDBMS product support
- Multi-server failover support
- Automated log-entry
- Process logging
- Operator observation, decision and action logging
- Comprehensive audit trails, based on log changes and entries

OSI's **EpiLog** is an extremely modern and powerful event and task logging system with the necessary features, compatibility and functionality to be effectively deployed; surpassing the needs of almost any system, from the relatively simple to the very complex.

Product specifications in this document are subject to change without notice.