

OpenTrend

Real-time and Historical Trending

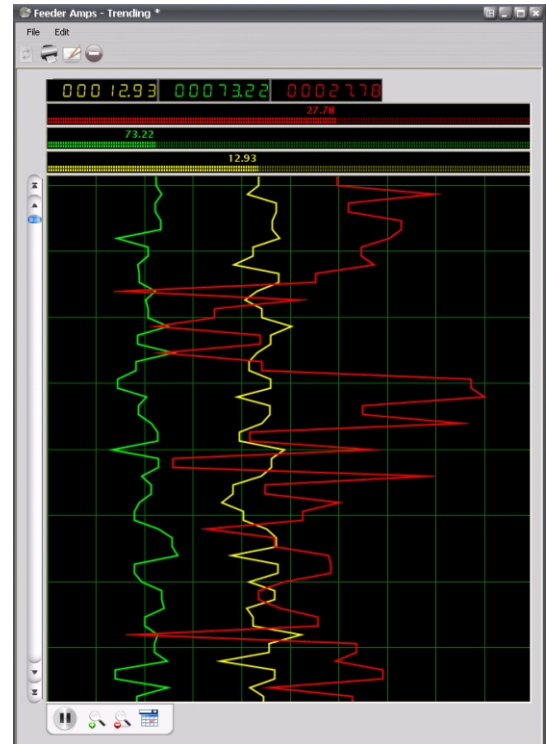
OpenTrend™ is a high performance trending application that supports real-time trending, historical trending and trend archival playback. The **OpenTrend** system has the ability to trend any real-time, calculated, or application generated data value from the system database.

The **OpenTrend** Archiver function, located on a central server, manages the collection and sampling of data. The historical trending supports the storage of trend variables for an indefinite amount of time, limited only by the amount of disk space on the server. Archived data can also be exported to “CSV” format for supplementary analysis or insertion of data into reports.

The Trend Archiver has the ability to sample and archive data periodically, as fast as every two seconds. Efficient compression techniques are used to save data to disk, and data is organized into monthly files, which can be permanently archived on CD media for regulatory reasons.

The **OpenTrend** Viewer allows users on any Windows-based client machine the ability to view real-time and historical trends. Viewer features include:

- Ability to trend up to eight trends in one window
- Support for Horizontal or Vertical trending
- Ability to have unlimited number of windows on a monitor (limited only by performance)
- Support for auto-scaling or use of a fixed scale
- Ability to zoom in on one area of a trend
- Ability to scroll forward or backward in time
- Support for a movable cross-hair for reading data values on a graph
- Choice of backgrounds (paper, textures, etc.)
- Choice of colors for pens or backgrounds
- Shading of graph area under the curve
- Ability to superimpose two different time frames in a single window for comparison purposes



The **OpenTrend** Archiver can be easily configured on a client machine through a “Trend Control” display. The user can add points to be archived and sampled for trending using a point and click method. Archival of data is independent of the viewing and points can be sampled and archived for later display.



Continued...

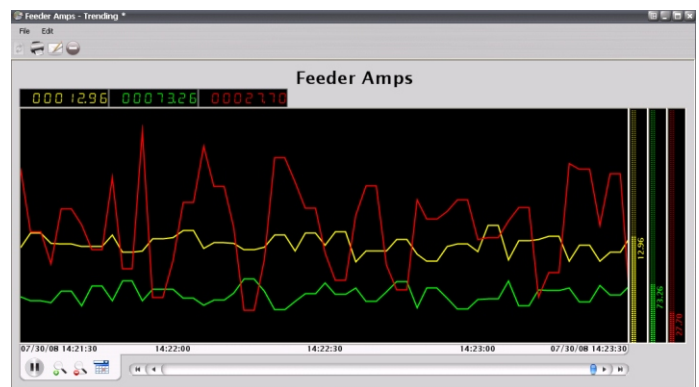
OpenTrend – Real-time and Historical Trending

Page 2



The **OpenTrend** Viewer allows for various views of the trend data to be built and saved as View Documents, which can be called up and activated at a later date. All preferences, and the look and feel, of the Trend Viewer are configured and saved for future use. And since Views are independent of the variables being sampled and collected, an infinite number of Trend Views, with various characteristics, can be built to show combinations of assorted trended variables.

The **OpenTrend** function is a native Microsoft® Windows® application and can be set up independently of the system User Interface. It can also be used in the corporate environment to give access to system planners or other engineering departments to view and analyze archived real-time data.



Furthermore, it is ideal as a replacement for strip chart recorders in a control room environment, which are maintenance intensive and obsolete.