

OpenTMS

Transaction Management System

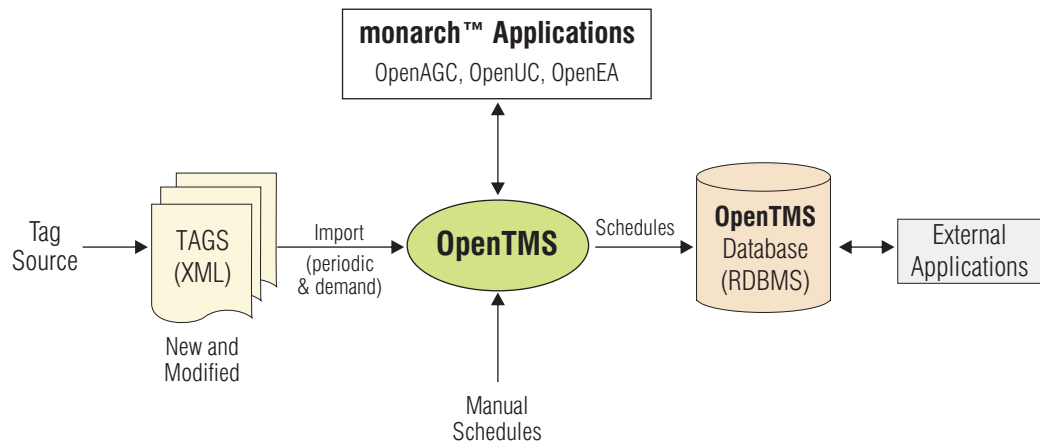
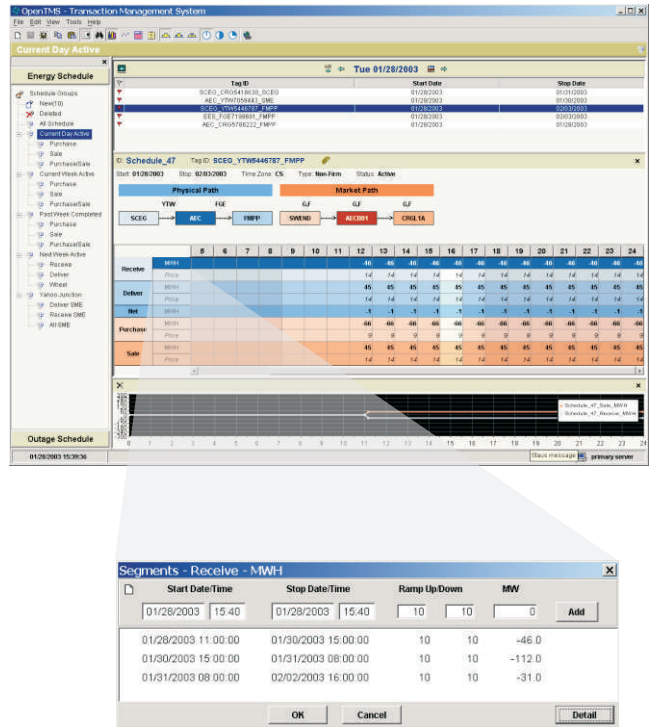
Of all the power system operations functions, the scheduling of interchange has perhaps undergone the most massive changes due to recent deregulation. Not only is there now a need to schedule raw energy transfers from one control area to another, but additional needs related to marathon wheeling, scheduling ancillary services, tracking financial aspects, and cross-referencing energy tags have become quickly apparent. OSI's Transaction Management System (**OpenTMS™**) has been developed in light of new industry challenges.

OpenTMS provides a Web-enabled GUI that is simple and elegant. All of the information is viewed within a single browser window that supports multiple simultaneous view panels. Information overload is avoided through the use of user-defined views that provide powerful filtering. Thus, the user can quickly focus on transactions of interest.

OpenTMS also provides schedule information to the Automatic Generation Control (**OpenAGC**) function for real-time implementation of the approved schedules. **OpenTMS** also provides schedule information to other applications through a simple API.

OpenTMS Key Capabilities/Benefits:

- Automatic import of schedules from tags, thus minimizing the tedious task of manually parsing and entering the bulk of the information. The Tag Import function allows for the import of XML energy tags (v 1.7).



Continued...

