

# OpenRMS

Report Management System

A wealth of information is available within the modern control systems. The tremendous amount of real-time and historical data is often compiled into system reports using third-party report building tools for delivery to users. Due to the volume of information available, the challenge is to deliver information in a timely and convenient manner to the corporate users as well as operations users who need access to these system reports.

**OpenRMS™**, OSI's **Report Management System**, is a report and documentation management system which provides secure access to centralized reports and documents through a single web portal interface.

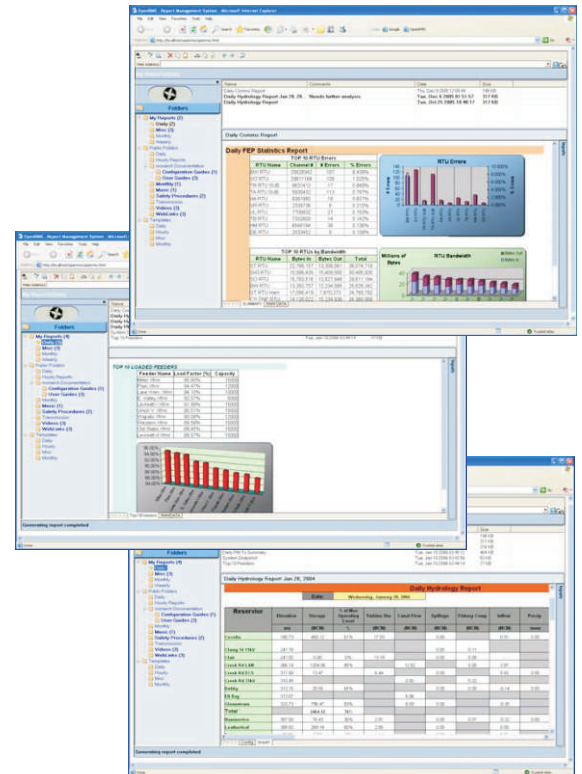
**OpenRMS** allows automatic conversion from report building programs such as Microsoft® Excel, Microsoft® Access, or Business Objects Crystal Reports®, to PDF format for users who do not natively support these applications. In addition to the portal-based access, reports and documents can also be scheduled periodically and sent to specific users or user groups via e-mail.

For reports that require input such as date or keyword search criteria (e.g. station name, plant name, etc.), **OpenRMS** will automatically detect the available input parameters, present the input parameters to the user, prompt for selection, generate the report, and present the new report to the user. Administration of reports, which requires authorization, uses drag and drop techniques and supports a large number of report templates and report groupings.

Security is always a concern and **OpenRMS** supports current standard IT practices such as Kerberos and Active Directory. In addition, OpenRMS includes features such as User Permission Groups and Permission Matrix Templates to make the secure user configuration as effortless as possible.

Salient features of the **OpenRMS** include:

- Secure access to documents and reports for corporate users
- Portal GUI application (thin client) can easily be made available to a large number of users
- PDF format allows users to view documents and/or reports without the applications used to generate the documents and/or reports



- Secure access to documents and/or reports
- Automated document and report distribution
- Document and report scheduling subsystem
- Report templates for easy report creation via the Portal GUI
- Standard drag and drop techniques
- Integrated web browser
- Smedia and additional file formats are supported
- Based on Microsoft® .NET technology

**OpenRMS**, which is independent of OSI's **monarch™** system, is a feature rich portal application which provides for efficient report and documentation management for utilities desiring to disseminate their system reports, work orders, operations manuals, training or media files, etc. across the enterprise.

**OpenRMS** fits well in an environment where thin client and simple user access and applications installation and maintenance are desirable.