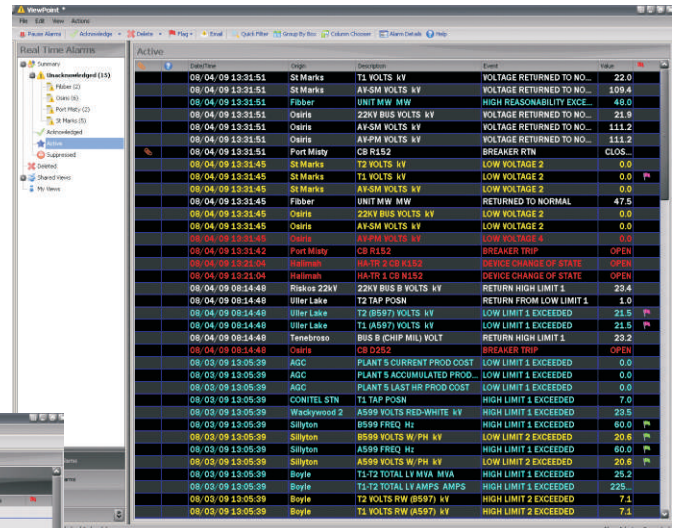
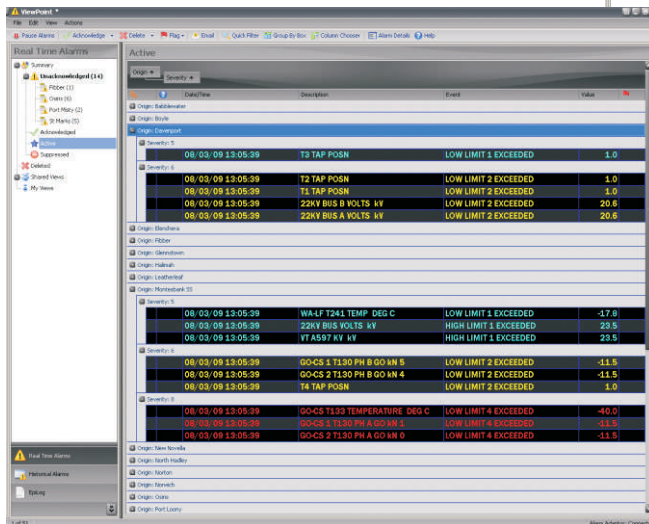


ViewPoint

Alarm Management System

OSI ViewPoint™ is a powerful, next-generation alarm management system that features a comprehensive interface, designed to present critical information and alarms to operators with the necessary speed and accuracy for the timely prevention and management of unfavorable events. ViewPoint quickly and intuitively displays real-time and system generated alarms and events from SCADA operations. Showing alarms generated by monarch™ applications and user built calculations, ViewPoint presents a highly intuitive Graphical User Interface (GUI), for the monitoring and management of critical alarms and events in real-time.



Date/Time	Origin	Description	Event	Value
08/04/09 13:31:51	St Marks	T1 VOLTS KV	VOLTAGE RETURNED TO NO...	22.0
08/04/09 13:31:51	St Marks	AV-SM VOLTS KV	VOLTAGE RETURNED TO NO...	109.8
08/04/09 13:31:51	Fiber	UNIT MW MW	HIGH RESPONSIBILITY EXCE...	48.0
08/04/09 13:31:51	Owits	22KV BUS VOLTS KV	VOLTAGE RETURNED TO NO...	21.9
08/04/09 13:31:51	Owits	AV-SM VOLTS KV	VOLTAGE RETURNED TO NO...	111.2
08/04/09 13:31:51	Owits	AV-PM VOLTS KV	VOLTAGE RETURNED TO NO...	111.2
08/04/09 13:31:51	Port Mitty	CB R152	BREAKER RTRN	CLOS...
08/04/09 13:31:48	St Marks	T2 VOLTS KV	LOW VOLTAGE 2	0.0
08/04/09 13:31:45	St Marks	T1 VOLTS KV	LOW VOLTAGE 2	0.0
08/04/09 13:31:45	St Marks	AV-SM VOLTS KV	LOW VOLTAGE 2	0.0
08/04/09 13:31:45	Fiber	UNIT MW MW	RETURNED TO NORMAL	47.5
08/04/09 13:31:45	Owits	22KV BUS VOLTS KV	LOW VOLTAGE 2	0.0
08/04/09 13:31:45	Owits	AV-SM VOLTS KV	LOW VOLTAGE 2	0.0
08/04/09 13:31:45	Owits	AV-PM VOLTS KV	LOW VOLTAGE 4	0.0
08/04/09 13:31:42	Port Mitty	CB R152	BREAKER TRIP	OPEN
08/04/09 13:31:36	Edinmah	HA-TR 1 CB N152	DEVICE CHANGE OF STATE	OPEN
08/04/09 13:21:04	Edinmah	HA-TR 1 CB N152	DEVICE CHANGE OF STATE	OPEN
08/04/09 08:14:48	Riskos 22KV	22KV BUS B VOLTS KV	RETURN HIGH LIMIT 1	23.4
08/04/09 08:14:48	Uller Lake	T2 TAP POSN	RETURN FROM LOW LIMIT 1	1.0
08/04/09 08:14:48	Uller Lake	T2 (B597) VOLTS KV	LOW LIMIT 1 EXCEEDED	21.5
08/04/09 08:14:48	Uller Lake	T2 (A597) VOLTS KV	LOW LIMIT 1 EXCEEDED	21.5
08/04/09 08:14:48	Tenebross	BUS B (CHP MIL) VOLT	RETURN HIGH LIMIT 1	23.2
08/04/09 08:14:48	Owits	CB D252	BREAKER TRIP	OPEN
08/03/09 13:05:39	AGC	PLANT 5 CURRENT PROO COST	LOW LIMIT 1 EXCEEDED	0.0
08/03/09 13:05:39	AGC	PLANT 5 ACCUMULATED PROD...	LOW LIMIT 1 EXCEEDED	0.0
08/03/09 13:05:39	AGC	PLANT 5 LAST HR PROD COST	LOW LIMIT 1 EXCEEDED	0.0
08/03/09 13:05:39	CONITEL STN	T1 TAP POSN	HIGH LIMIT 1 EXCEEDED	7.0
08/03/09 13:05:39	Wackywood 2	A599 VOLTS RED-WHITE KV	HIGH LIMIT 1 EXCEEDED	23.5
08/03/09 13:05:39	Sillyton	B599 FREQ HZ	HIGH LIMIT 1 EXCEEDED	60.0
08/03/09 13:05:39	Sillyton	B599 VOLTS W/PH KV	LOW LIMIT 2 EXCEEDED	20.6
08/03/09 13:05:39	Sillyton	A599 FREQ HZ	HIGH LIMIT 1 EXCEEDED	60.0
08/03/09 13:05:39	Sillyton	A599 VOLTS W/PH KV	LOW LIMIT 2 EXCEEDED	20.6
08/03/09 13:05:39	Boyle	T1-T2 TOTAL LV MVA MVA	HIGH LIMIT 1 EXCEEDED	25.2
08/03/09 13:05:39	Boyle	T1-T2 TOTAL LV AMPS AMPS	HIGH LIMIT 1 EXCEEDED	225
08/03/09 13:05:39	Boyle	T2 VOLTS RW (B597) KV	HIGH LIMIT 2 EXCEEDED	7.1
08/03/09 13:05:39	Boyle	T1 VOLTS RW (A597) KV	HIGH LIMIT 2 EXCEEDED	7.1

Operators of ViewPoint are able to:

- Manage alarms in a modern and logical GUI and layout
- Utilize several folder views for the efficient categorization of related alarms
- Design and enact personal and shared rules, views and filters
- Group alarms through intuitive point-and-click and drag-and-drop functions
- Evaluate and analyze historical alarms through a calendar based view
- Easily manipulate individual alarms through drag-and-drop, cut-and-paste, send-to (forward), in addition to other popular functions

ViewPoint is a vital component in maintaining the reliable operation of your critical assets in real-time. By displaying all of the alarms and events within an operator's assigned area of responsibility, ViewPoint presents a swift and accessible viewport into the current conditions of your system. Additional features of ViewPoint that include annotations, attachments and historical analyses, provide critically beneficial information that supports process and system improvements, proactively preventing future events.

Contrary to conventional alarm management systems, ViewPoint includes a rich set of supplemental features;

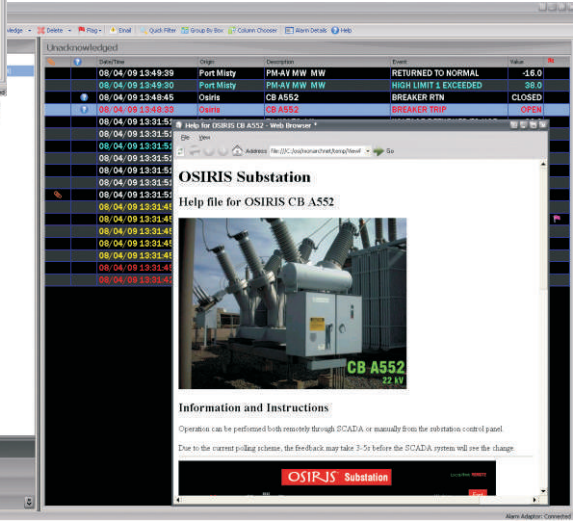
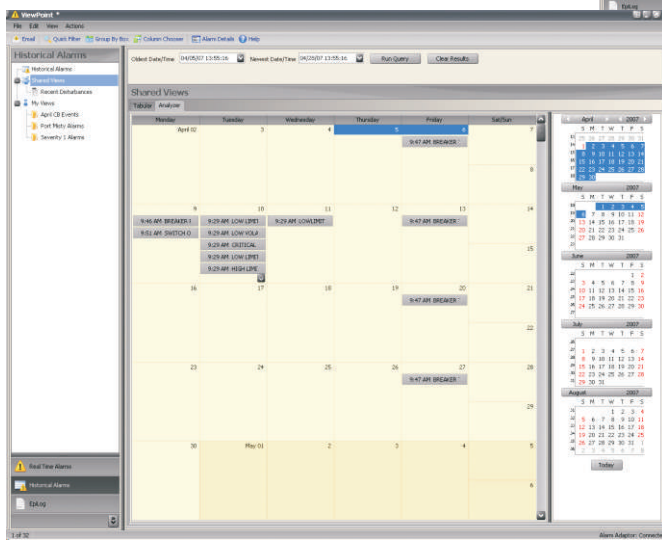
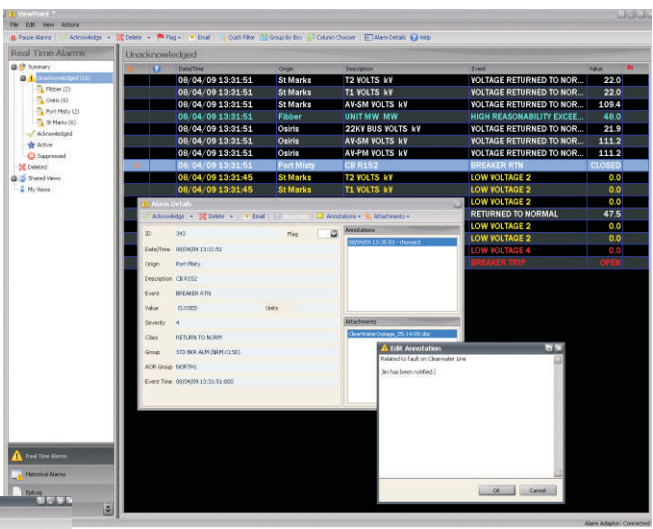
Flexibility is a common theme among all OSI products, including ViewPoint. ViewPoint's customizable GUI allows for the sorting, selecting and grouping of alarms into delimited columns, just as you would with a traditional office spreadsheet application. Operators can also adjust column widths, font sizes and color schemes, in accordance with specific user preferences.

Product specifications in this document are subject to change without notice.



Additional features of **ViewPoint** include:

- Annunciation and severity filtering, emphasizing particular events
- Alarm specific help support, delivered to the operator
- A flag function that identifies alarms and events as requiring explicit processing
- Organizational benefits through advanced filtering capabilities
- Annotations to document unique circumstances (Useful during shift changes and historical analysis)



In addition to the standardized features of traditional alarm management systems including acknowledgment and deletion, **ViewPoint** presents a comprehensive tool for operators to actively manage alarms in a manner that appreciably increases the overall efficiency and reliability of utility operations. The intuitive features of **ViewPoint** also assist operators in the identification of patterned alarm trends; potentially preventing large scale negative events before they occur.

