

monarch/SGP™

monarch Smart Grid Platform

As the world enters a new era of energy consciousness, electric utilities are being faced with higher costs, increased scarcity of energy, aging infrastructure for delivery, various environmental considerations and a more empowered consumer. Over the coming decades, utilities will tackle these and other daunting challenges and will capitalize on opportunities never before experienced.

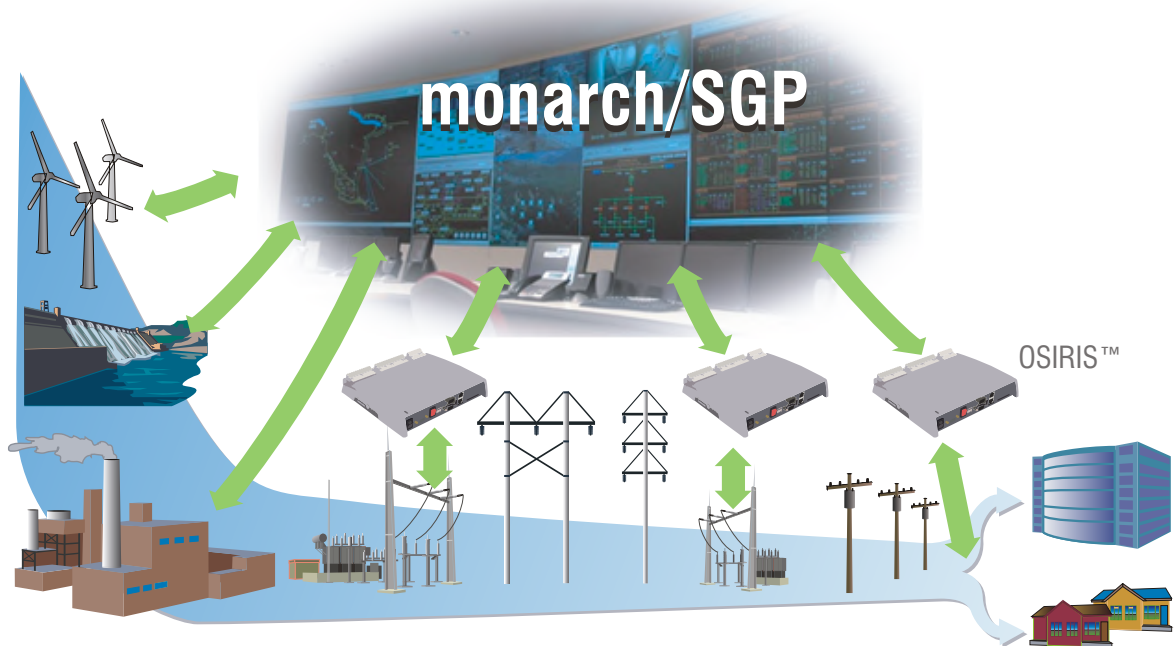
In negotiating such an uncharted environment wherein the decision making processes are orders of magnitude more complex and require the consideration of many millions of variables, a more thoughtful approach to Electric Grid operation has become a necessity.

No longer is it possible for the systems, methodologies and information infrastructures that were designed and implemented decades ago to handle the unprecedented challenges in this new world of automation.

OSI recognizes the opportunity to assist utilities in the mission to implement a smarter power grid.

Evidenced by expert opinions and recently established precedents, Smart Grid initiatives are expected to become the most significant engineering achievement since the rise of the internet. Benefits of adopting such an initiative include improved workforce productivity, improved customer satisfaction, optimized distribution management, more efficiently distributed generation, improved asset utilization through condition monitoring and predictive maintenance, as well as improved return on investment for stakeholders.

To help utilities embark on this vision and the road to a functional and intelligent energy delivery network, OSI has introduced a more robust version of the industry proven **monarch™** platform, specifically designed for Smart Grid operations. **monarch/SGP™** (Smart Grid Platform) presents a solid, reliable and highly scalable platform for utilities embarking on Smart Grid initiatives. This secure, high performance platform is equipped to handle millions of real-time data points from all levels of the electric power supply chain; from generation, to end-user consumption.



Continued...

In addition to SCADA, EMS, GMS and DMS applications, **monarch/SGP** supports third-party solutions such as Advanced Metering Infrastructure (AMI) and Outage Management Systems (OMS). Flexible integration is enabled through support for the industry's most common Application Programming Interfaces (API's), Service Oriented Architecture (SOA) and Enterprise Service Bus (ESB). At the same time, system administrators and system integrators can flexibly manipulate and develop their own tools within this adaptive integration environment.

monarch/SGP converges on three independent areas of the core Smart Grid technologies:

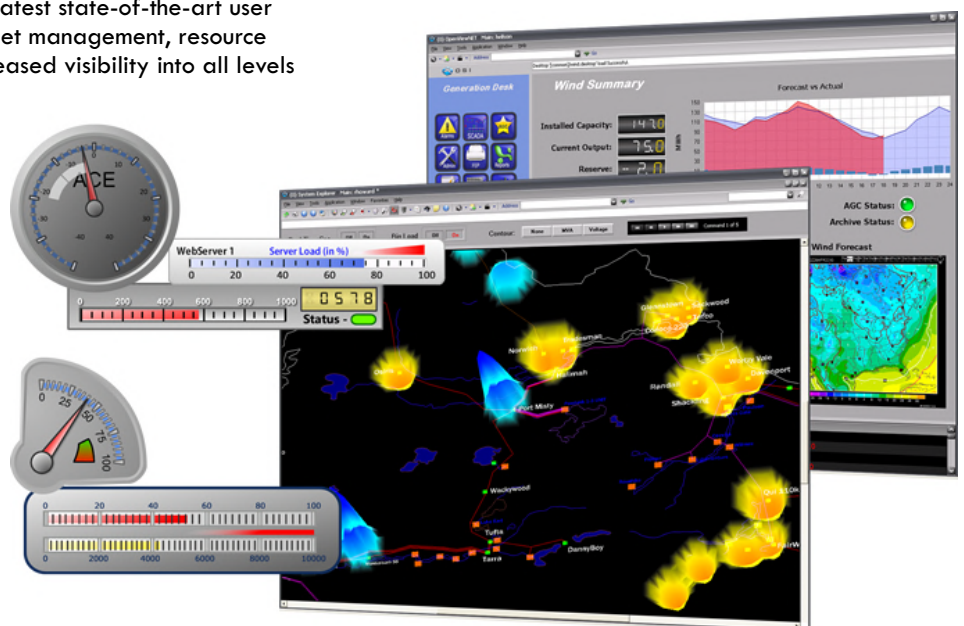
- Hyper scalability is built into the platform to support tens of millions of data measurement points, made necessary by a fully integrated grid.
- Expanded communications and interfaces are supported for a wide variety of new devices such as Smart Meters and Phasor Measurement Units, as well as home automation and enterprise integration adaptors.
- Advanced analytics, business intelligence applications and the latest state-of-the-art user interfaces support asset management, resource optimization and increased visibility into all levels of the grid.

The decision making tools of **monarch/SGP** are based on next-generation data presentation features; from fully-configurable dashboards to programmable widgets, real-time and historical trending and spreadsheet-style filtering and report generation. Network operators, corporate executives and system administrators are afforded a wealth of information at their fingertips.

In addition to **monarch/SGP**, OSI's SmartGrid solution offerings include **OSIRIS™**, an innovative and highly interoperable field measurement and control device, supporting multiple communications protocols for transmitting grid information to network operators. The unsurpassed functionality and integrated security features of **OSIRIS** serve as the new standard for remote telemetry.

OSI prides itself on delivering flexible, reliable, open, user-friendly, innovative and secure automation solutions for the monitoring, control and optimization of utility operations. With a satisfied worldwide user-base and the dynamic ability to adapt to changing industry requirements, OSI is uniquely equipped to assist utilities around the globe in their individual Smart Grid initiatives.

For more information, please visit www.osii.com.



Product specifications in this document are subject to change without notice.